

Jimboomba

SA3 Population Health
Snapshot 2023

61,638



Demographics₁

people living in this region in 2021

582 km²

Age	First Nations		Non Indigenous		Not Stated		Total
	Count	% of Age group	Count	% of Age group	Count	% of Age group	
0-4	398	8.3%	4,163	87.2%	214	4.5%	4,775
5-14	734	6.9%	9,245	87.5%	584	5.5%	10,563
15-24	471	5.9%	7,151	89.3%	382	4.8%	8,004
25-44	649	3.8%	15,494	91.1%	872	5.1%	17,015
45-64	380	2.6%	13,782	92.6%	722	4.9%	14,884
65+	82	1.3%	6,069	94.9%	246	3.8%	6,397
Total pop	2,714	4.4%	55,904	90.7%	3,020	4.9%	

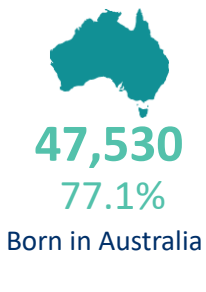
Male
30,592 49.6%

Female
31,057 50.4%

(Approximates)

Priority Populations₁

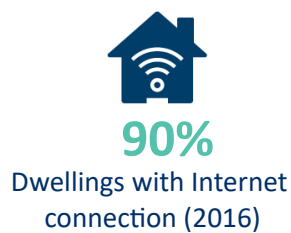
Top 5 Ancestries



Ancestry	Count
English	25,967
Australian	24,120
Scottish	6,092
Irish	5,567
German	3,420



Social determinants_{2,1}



Education	Eligible respondents	% respondents
Didn't go to school	277	1%
Yr10 or below	16,015	37%
Yr11/equiv	4,260	10%
Yr12/equiv	23,178	53%

Higher education	Eligible respondents	% respondents
Cert I/II/nfd	1,733	7%
Cert III/IV	12,170	51%
Advanced Diploma/Diploma	4,556	19%
Grad Diploma/Certificate	726	3%
Bachelor Degree	3,968	17%
Post Grad Degree	819	3%

Medians (middle of the group)₁

34yrs
Age

\$842
Weekly personal
income

\$2,143
Weekly family
income

\$2,106
Weekly household
income

\$2,000
Monthly
mortgage
repayments

\$390
Weekly rent

Jimboomba

SA3 Population Health
Snapshot 2023

61,638
people living in this region in 2021



Vulnerable children₃

Australian Early Developmental Census

50%

children developmentally on track

13%

children vulnerable in 2 or more domains

14%

children vulnerable: physical health & wellbeing domain

7%

children vulnerable: language & cognitive skills domain

11%

children vulnerable: social competence domain

Self-reported long term health conditions₁

First Nations
996
37%

Non Indigenous
18,598
33%

Not Stated
84
3%

People with 1 or more health conditions

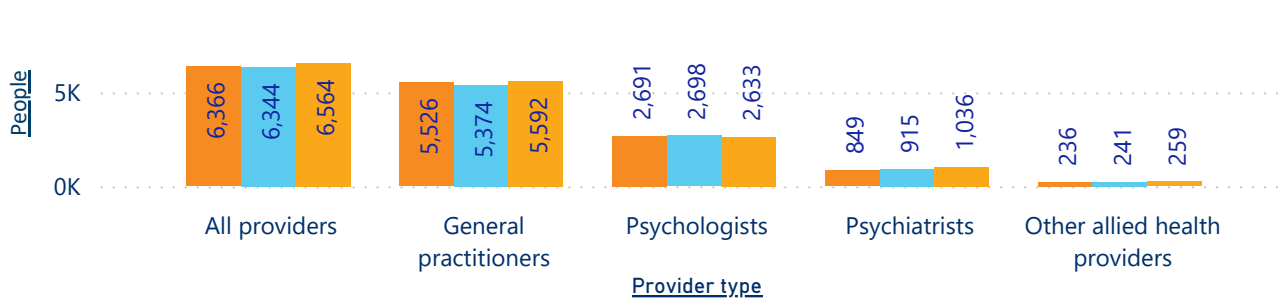
Health Condition	First Nations		Non Indigenous		Not Stated		Total	
	Count	%	Count	%	Count	%	Count	%
Arthritis	152	5.6%	4,700	8.4%	24	0.8%	4,876	7.9%
Asthma	403	14.8%	5,434	9.7%	23	0.8%	5,860	9.5%
Cancer	48	1.8%	1,470	2.6%	10	0.3%	1,528	2.5%
Dementia	4	0.1%	212	0.4%	3	0.1%	219	0.4%
Diabetes	106	3.9%	2,482	4.4%	23	0.8%	2,611	4.2%
Heart Disease	55	2.0%	1,844	3.3%	14	0.5%	1,913	3.1%
Kidney Disease	20	0.7%	458	0.8%	4	0.1%	482	0.8%
Lung Condition	40	1.5%	1,147	2.1%	7	0.2%	1,194	1.9%
Mental Health Cond	380	14.0%	5,516	9.9%	23	0.8%	5,919	9.6%
Stroke	12	0.4%	446	0.8%	4	0.1%	462	0.7%
Other	293	10.8%	4,925	8.8%	15	0.5%	5,233	8.5%
None	1,566	57.7%	34,918	62.5%	132	4.4%	36,616	59.4%
Not Stated	152	5.6%	2,388	4.3%	2,804	92.8%	5,344	8.7%

Note not additive across health conditions as people could multi select these in the census

Mental health₄

People receiving Medicare-subsidised mental health-specific services

Fin Yr ● 2018-19 ● 2019-20 ● 2020-21



Total services delivered

Fin Yr	#
2018-19	26,027
2019-20	25,418
2020-21	27,076

Death - Top 3 causes of death₅

Crude rate per 100,000

1. Coronary heart disease(27.8) 2. Lung cancer(24) 3. COPD(15.8)

SOURCES: 1 ABS 2021 Census, Datapacks, retrieved 01/12/22, <www.abs.gov.au/census/find-census-data/datapacks>, 2 Queensland Government Statistician's Office, Regional Database, retrieved 5/12/22, <www.qgso.qld.au> | 3 Australian Early Developmental Census, Data, retrieved 5/12/22, <www.aedc.gov.au/early-childhood> | 4 AIHW, Medicare-subsidised mental health specific services, retrieved 5/12/22, <www.aihw.gov.au/mental-health/topic-areas/medicare-subsidised-services> | 5 AIHW, MORT Death data 2016-20, retrieved 10/10/22, <www.aihw.gov.au>

Note -The ABS data captured in this report presents people as Male or Female, despite the census allowing for non-binary responses. Further information in how this was collected in the census and consequently provided can be found at www.abs.gov.au/articles/non-binary-sex-2021-census