

My Health Record and On Demand Training

This factsheet provides instructions on how to access the Australian Digital Health Agency My Health Record software simulators.

On Demand Training is an online platform that allows users to simulate the use of My Health Record in their clinical software using a fictional patient and General Practitioner log in.

There are a number of software simulators available through On Demand Training including:

Best Practice, Communicare, Fred Dispense, Genie, Medical Director and ZedMed.

The On Demand Training platform also provides a simulation of the My Health Record Consumer Portal. This system simulates the look and functionality of a consumer's view of the My Health Record system for a fictitious patient, and replicates many of the functions with which consumers may interact.

To access the On Demand Training portal:

1. Through your internet browser go to: <https://www.myhealthrecord.gov.au/for-healthcare-professionals/howtos/clinical-software-simulators-and-demonstrations>

From the screen you will need to select 'Access the clinical software simulators'. Demonstrated below.

Home > For healthcare professionals > Access training and resources

Clinical software simulators and demonstrations

Healthcare professionals can simulate use of My Health Record in their clinical software.

Clinical software simulators

The clinical software simulators are regularly updated as new features become available. You can check the [list of software products using digital health](#). If you would like to see a particular digital health feature or software product demonstration and it is not included here, please email help@digitalhealth.gov.au

[Access the clinical software simulators](#) 

- You will be directed to the log in screen where you are required to enter the following credentials to access the training portal.

Username: OnDemandTrainingUser

Password: TrainMe

Select 'Sign In'

Log In

vmware Horizon

Username: OnDemandTrainingUser

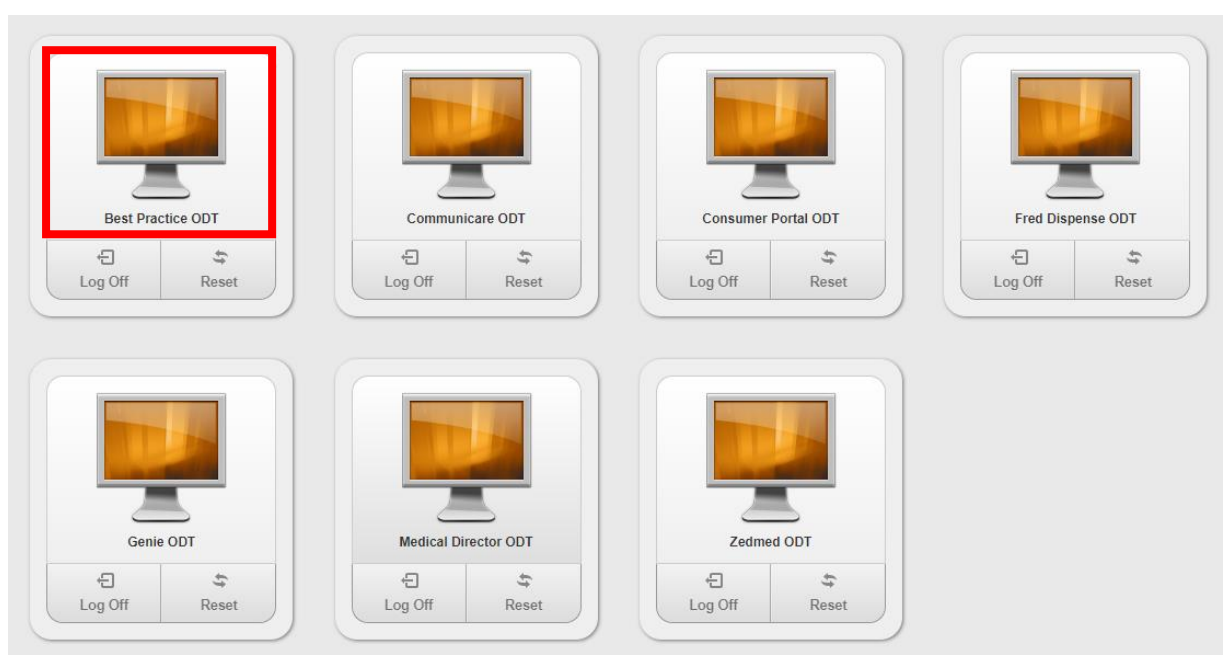
Password: Password

Domain: NEHTA

Cancel Sign In

- Once you have logged in you will need to select the software you would like to use.

Please note: for the purpose of the steps below, Best Practice software has been selected.

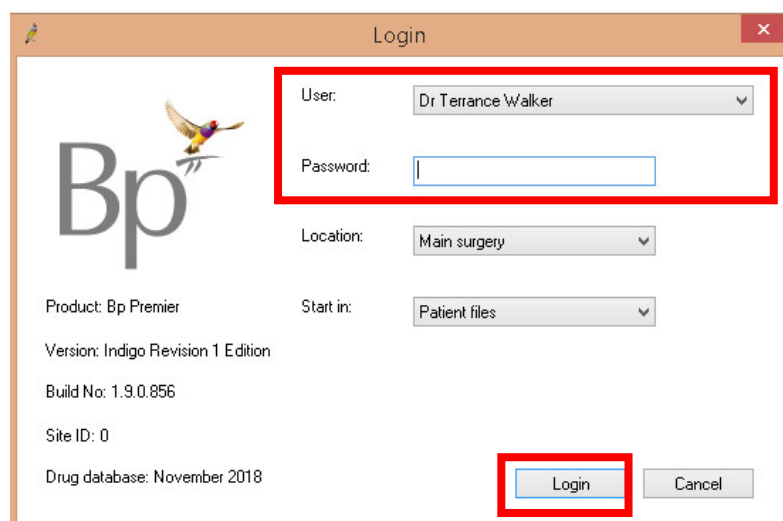


- This will take you to a desktop view. From here, double click on the clinical software icon. In this case it is Best Practice.

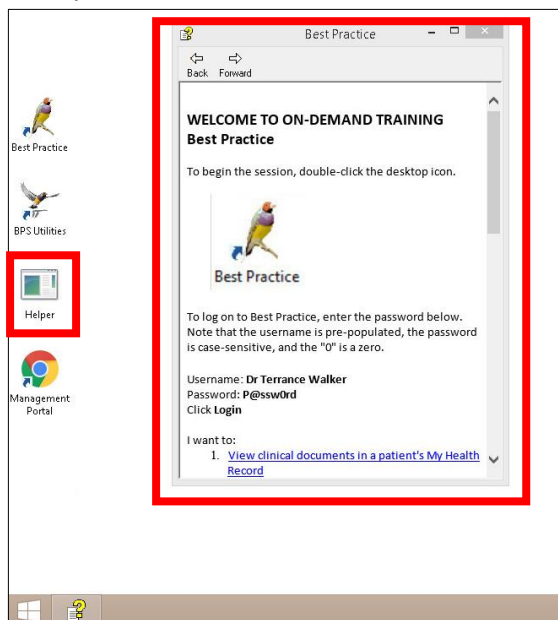


- Log into the clinical software using the following credentials.

Software	Username	Password
Best Practice	Dr Terrance Walker	P@ssw0rd
Medical Director	Dr Phillip Lang	
Genie	Charley Fletcher	
Fred	MS	
ZedMed	CGREEN	
Communicare	jolieb	



6. Each software simulator contains a 'helper' file with further instructions on how to access a test patients My Health Record. This file is stored on the desktop and will automatically open when you are in the test environment.



7. The 'helper' file provides details on the patient records you can open. For this example, the patient file you will need to open is Caleb Derrington.

You will be able to interact with the patient record as you normally would in a patient consult or when dispensing medication including viewing, uploading and saving into their My Health Record.

Important note: If the on demand training portal isn't displaying correctly on your screen, select the drop down arrow at the top of the screen. Click on the word *OnDemandTrainingUser@NEHTA* to expand the menu then select *Toggle Full Screen*.



In addition, reference guides are available on the My Health Record website:

www.myhealthrecord.gov.au

The team at Brisbane South PHN can also provide further training and support. Please contact us on 1300 467 265 or email: health@bsphn.org.au